

“TO BE REMOVED FOR USE BY THE OCCUPANT.”

Jason International, Inc.
8328 MacArthur Drive
North Little Rock, AR 72118
www.jasoninternational.com
MADE IN THE U.S.A.



49-2007-003
Date 11/14

OWNER'S MANUAL

Alexia™ SL/SR Shower Bath INSTALLATION, OPERATION, AND MAINTENANCE



If the carton shows sign of damage, inspect the product before accepting and describe the problem on the Bill of Lading.

INSPECTION

Inspect the unit prior to installation. In the event of a problem, DO NOT install the unit. All components are factory assembled onto the bath and the unit is water tested and inspected prior to leaving the factory.

The installer is responsible for inspecting the unit to insure that it is free from defects and/or shipping damage. The factory is not responsible for damage that might have been avoided by inspection or testing prior to installation.

Note: Transportation and insurance from Jason's factory are the buyer's responsibility.

Damage sustained in transit is the responsibility of the carrier. The owner or installer **MUST** open, uncrate, and inspect the unit for damage when it is delivered. Inspect plumbing and whirlpool surface for missing or damaged components. Alert the dealer of any discrepancies. If damage is discovered, immediately notify the carrier in writing and request that they have a representative inspect the unit. If

the carrier fails to respond, report it to the seller and carrier. Always file a freight claim promptly.

Damage to the unit during installation will not be covered by warranty and is the responsibility of the installer. **ALL WARRANTY CLAIMS ON ACRYLIC SURFACE DAMAGE MUST BE MADE PRIOR TO INSTALLATION.**

To protect the unit from damage, keep the bath in its carton until ready for installation.

CAUTION: DO NOT LIFT OR HANDLE THE BATH BY ITS PLUMBING.



OWNER'S RECORD

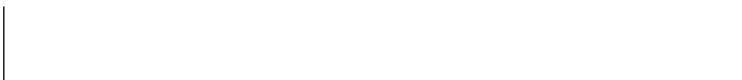
**PLACE SERIAL NUMBER CARD WITH
PRODUCT CONFIGURATION IN THIS BOX**

Dealer: _____

Date Purchased: _____

Date Installed: _____

Installer: _____



INSTALLATION INSTRUCTIONS

INSTALLATION

See the **USER MAINTENANCE INSTRUCTIONS** on page 3 prior to installation for humidity and mold prevention suggestions.

1. A finish frame should be constructed under the shell rim to support the shower bath lip and level the shower bath deck to assist the draining of any water on the deck of the shower bath into the bath well. This frame is not intended to support the full shower bath weight (**See Figure 1**). Construct the framing to support the shower bath's lip if the shower bath is to be installed in an alcove (**See Figure 1 & Figure 2**).

100% Silicone with mildew resistant properties should be applied between the water resistant backer board and the deck of the bath.

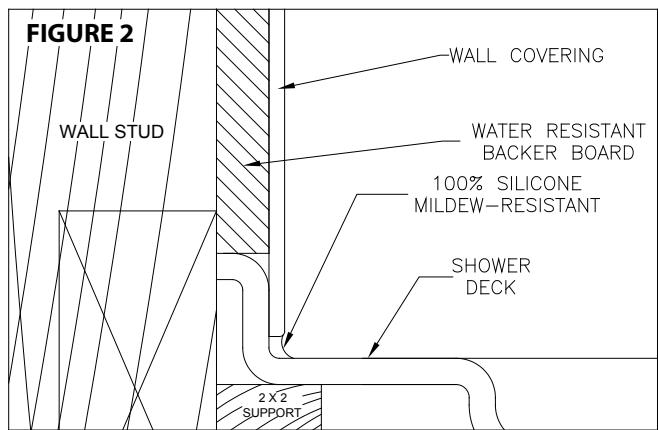
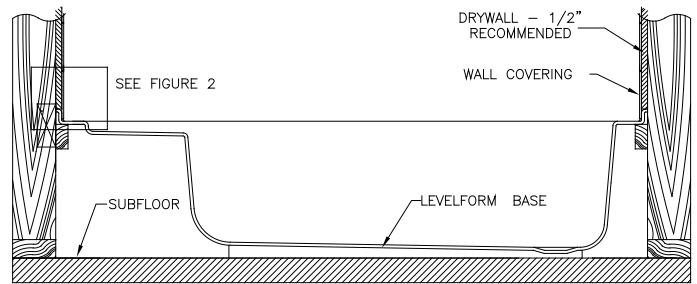
2. **Install the bath level for proper drainage.** The shower bath is equipped with a pre-leveled full support base designed to provide level support if installed on a firm, level, and flat surface (**See Figure 1**). Mortar is required when the subfloor is not smooth and level.

3. **Install the drain and overflow assembly** to the shower bath shell according to the instructions.

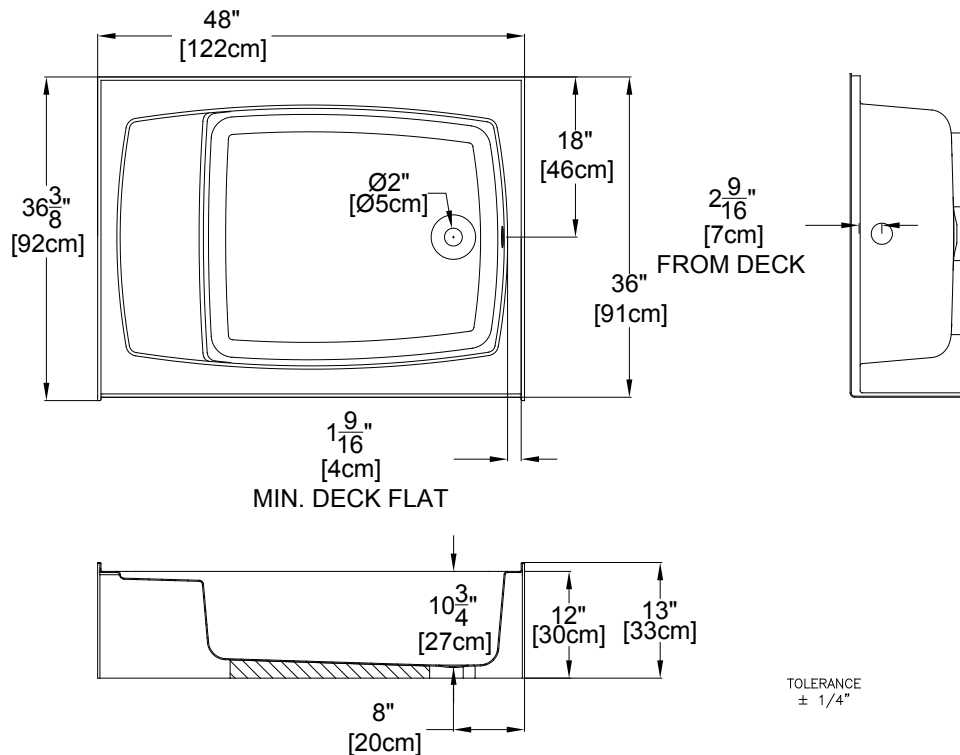
4. Position the shower bath in the area of intended installation. The approximate shower bath dimensions are shown in **Figure 3, "SHOWER BATH DIMENSIONS."**

FIGURE 1

TYPICAL CROSS SECTION VIEW



SHOWER BATH DIMENSIONS
FIGURE 3



NOTE:
All dimensions are approximate. Shower bath should be at the site before framing.

USER MAINTENANCE INSTRUCTIONS

HUMIDITY

Warning: Avoid high humidity levels in your home. Mold, mildew, fungi and bacteria which may be harmful to health thrive in areas with continued high humidity levels; therefore, every precaution should be taken to make sure your plumbing fixtures including bathtubs, therapy baths or showers do not become a source of high humidity due to improper installations or leaks.

To avoid having your plumbing fixtures become a source of unwanted humidity, please make sure the following steps are taken prior to installation.

1. Make sure the area where the bathtub or shower is installed is well vented and allows enough ventilation and air circulation to dry the bathroom environment within a short time after taking a bath or shower.
2. If your bath or shower unit is tiled-in, use units with an integral tile flange or make sure a tile flange kit or a similar mechanical barrier is installed to prevent shower spray, splash or overflow to leak behind the bathtub.
3. Make sure the plumber properly tests your therapy bath before it is roughed in to make sure there are no leaks and it is installed with proper access to bath equipment.
4. Make sure that all the plumbing and fixtures in the bathroom are in good working order and have no leaks.
5. Do not use carpeting or other materials or furniture, which can hold moisture in your bathroom.
6. Use disinfectant to clean any bathroom surfaces, which are regularly exposed to moisture.
7. Clean humidifiers, dehumidifiers and air conditioning

condensing units regularly with a disinfectant such as chlorine bleach and replace filters as needed.

8. Clean moldy surfaces as soon as any mold appears by using a detergent/soapy solution and appropriate household cleaner. Always use gloves during cleaning. Dispose of any sponges or rags used to clean mold.

CLEANING

With minimum care, the acrylic surface of your shower bath will retain its high luster finish for many years. For regular cleaning use a soft, wet cloth or sponge and a mild nonabrasive liquid detergent. Rinse the base thoroughly after cleaning. (Never use abrasive or grit type powder cleaners or pads to avoid dulling of the acrylic surface.)

SURFACE MAINTENANCE

Areas with minor scratches or dull surfaces can be restored by applying commercially available plastic polish (i.e. Novus Plastic Polish No. 2, available from a Jason distributor and where automotive supplies are sold), followed by an application of acrylic paste wax. Buff the surface with a clean soft cloth. Do not use sandpaper, steelwool, or abrasive rubbing compounds.

If scratches are too deep to rub out, or if the damage penetrates the acrylic surface, consult your dealer for recommendations on surface repair.

WARRANTY REGISTRATION: Register your product's warranty online at www.jasoninternational.com.

WARRANTY

Jason International, Inc. (Jason), warrants its baths to be free from defects in workmanship and materials as provided in the enclosed Warranty Statement and Warranty validation card.

The pre-addressed warranty registration card **MUST** be filled out by the purchaser within thirty (30) days from purchase and mailed to Jason International, Inc., in order for limited warranty to become effective.

IMPORTANT SAFETY INSTRUCTIONS

INSTRUCTIONS PERTAINING TO THE RISK OF FIRE, ELECTRIC SHOCK, OR INJURY TO PERSONS

WARNING: When using this unit, basic precautions should always be followed, including the following:

This manual contains information and instructions for proper operation and maintenance of your bath. Failure to follow these instructions could result in personal injury, electrical shock, or fire.

READ AND FOLLOW ALL INSTRUCTIONS CAREFULLY

DANGER: TO REDUCE THE RISK OF INJURY FOLLOW THESE PRECAUTIONS:

- A. Do not permit children to use this product unless they are closely supervised at all times.
- B. Use this unit only for its intended use as described in this manual. Do not use attachments not recommended by the manufacturer.
- C. The water in a soaker bath should never exceed 40°C (104°F). Water temperatures between 38°C (100°F) and 40°C (104°F) are considered safe for a healthy adult. Use time should be limited to approximately 30 minutes, followed by a shower to cool down. Longer exposures may result in hyperthermia. The symptoms of this condition are nausea, dizziness, and fainting, and it can be fatal. Lower water temperatures are recommended for extended use (exceeding 10 -15 minutes) and for young children.
- D. Since excessive water temperatures have a high potential for causing fetal damage during the early months of pregnancy, pregnant or possibly pregnant women should limit whirlpool water temperatures to 38°C (100°F).
- E. The use of drugs or alcoholic beverages before or during soaker bath use may lead to unconsciousness with the possibility of drowning. Never use the soaker bath while under the influence of alcohol, anticoagulants, stimulants, antihistamines, vasoconstrictors, vasodilators, hypnotics, narcotics, or tranquilizers.
- F. Persons with a medical history of heart disease, low or high blood pressure, circulatory system problems, or diabetes should consult a physician before using a soaker bath.
- G. Persons using medication should consult a physician before using a soaker bath since some medication may induce drowsiness while other medication may affect heart rate, blood pressure, and circulation.

DANGER: To reduce the risk of injury, enter and exit the bath slowly.

WARNING: Never operate electrically connected devices in or near the bath. Never drop or insert any object into any opening.

To avoid the possibility of personal injury and discoloration of the acrylic surface, the inlet water temperature should not exceed 40°C (104°F). The bath should be drained after each use. Each bather should start their bath with fresh water.

Do not use oil base additives in your soaker bath.

CAUTION: Do not use harsh abrasives or solvents for cleaning this unit.

INSTALLER/OWNER BEARS ALL RESPONSIBILITY TO COMPLY WITH ALL STATE AND LOCAL CODES WHEN INSTALLING THIS PRODUCT.

SAVE THESE INSTRUCTIONS

JASON INTERNATIONAL, INC.

8328 MacArthur Drive • North Little Rock • Arkansas • 72118

www.jasoninternational.com