

Jason International, Inc.
8328 MacArthur Drive
North Little Rock, AR 72118
www.jasoninternational.com
MADE IN THE U.S.A.



JASON[®]
HYDROTHERAPY

49-2016-005
Date 11/14

OWNER'S MANUAL

GH300 Grip Handle(s) Kit for forma[®] Baths INSTALLATION INSTRUCTIONS

INTRODUCTION

Included with each GH300 Grip Handle Kit:
One GH300 Grip Handle - (of selected finish)

INSPECTION

Inspect the kit for damage or shortages prior to installation. Damage sustained in transit is the responsibility of the carrier. If transit damage is discovered, notify the carrier immediately and file a freight claim with them.

TOOLS & MATERIALS REQUIRED

For safety and ease of installation, Jason recommends the following tools: Wrench, drill, allen wrench, level or square and tape.

INSTALLATION

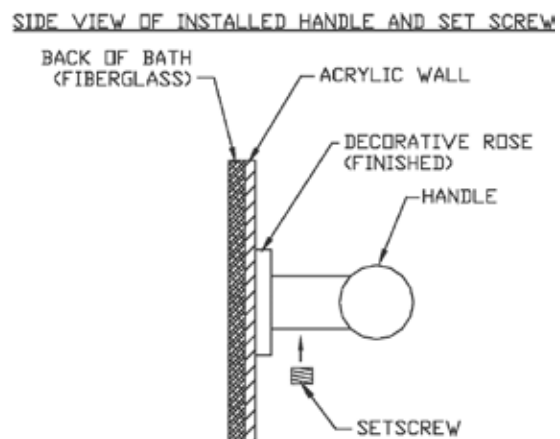
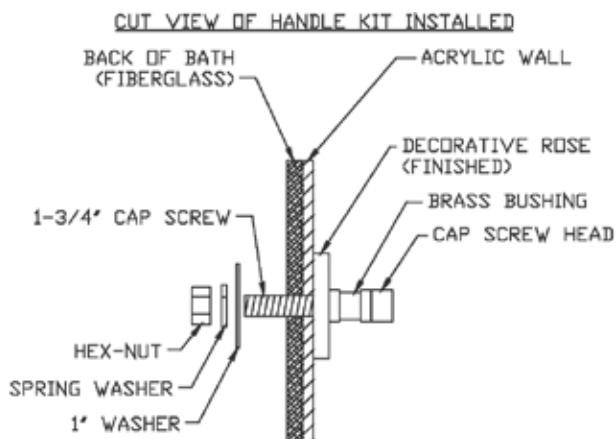
1. Use the drilling template on the following page to obtain hole layout and proper handle placement.

NOTE: THE GH300 GRIP HANDLE KIT MUST BE INSTALLED BEFORE BATH INSTALLATION.

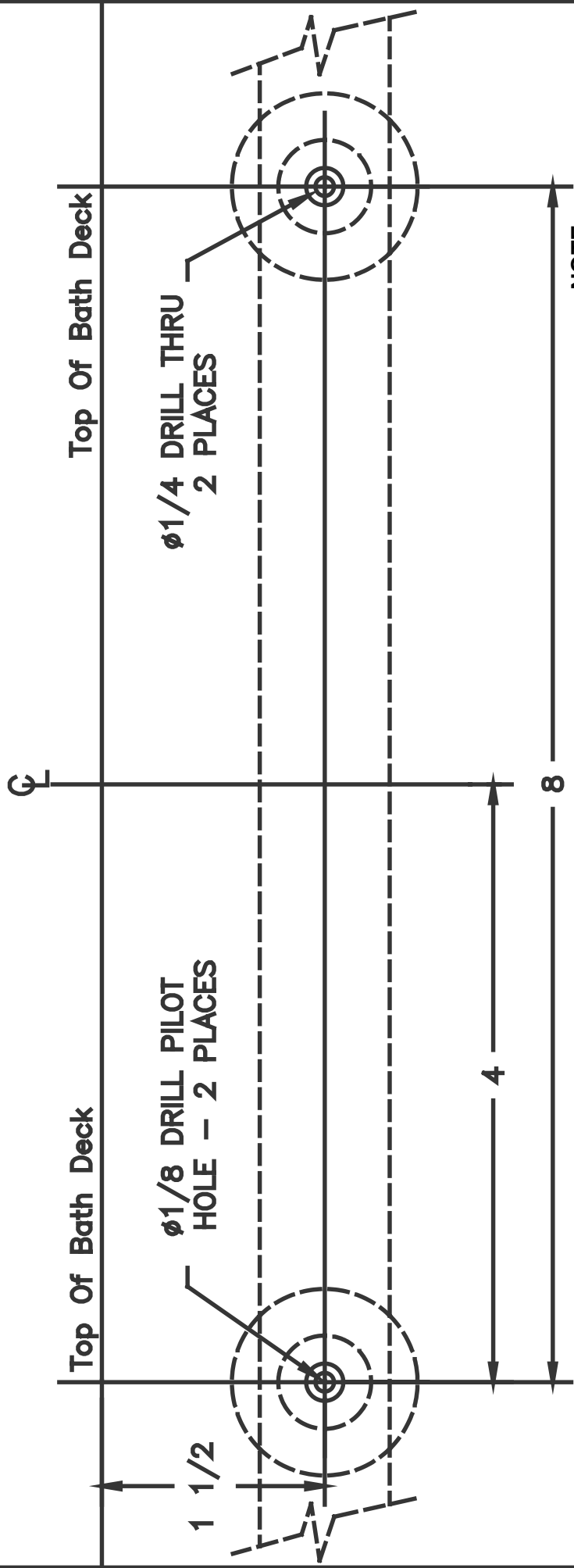
The GH300m Grip Handle(s) for the forma[®] DA500 must be factory installed.

2. Place paper template provided at proper location on the Bath sidewall, aligning template according to top of Bath Deck. Tape in place.

3. Drill two initial 1/8" [3mm] pilot holes at locations shown on the template. Using the drilled pilot hole as a guide, finish drilling the holes with a 1/4" [6mm] diameter drill bit.
4. Place one of the threaded brass bushings on the stainless steel cap screw.
5. Place the finished decorative rose on the cap screw and place the cap screw assembly through one of the drilled holes from the inside of the bath well so the hexagonal recess is facing towards the interior of the bath well.
6. Then on the back side of the bath wall place the 1-1/4" [3cm] stainless steel washer followed by one of the spring washers and then the 1/4" [6mm] stainless steel hex-nuts on the cap screw and securely tighten.
7. Before drilling be sure to set the depth of each drill bit to be used at 1" [2.5cm]. (Masking tape may be used.) This will prevent the drill chuck from damaging the Bath surface.
8. Finally slide the grip handle over the cap screw until it sets flush onto the decorative rose making sure the set screw hole is facing down, then insert the set screws and tighten.



GH300 HANDLE DRILLING TEMPLATE



NOTE:
As dimensions of this template may change during the printing process verify actual dimensions before drilling. Jason will not be responsible for dimensional errors.

GH300 Handle Outline Shown

- AC635
- RE630
- CN550
- RC630
- AC630
- RC635
- RE553

IMPORTANT: Before Drilling!
Be Sure To Check Backside Of Tub Shell For Adequate Clearance For Holes And Mounting Hardware