

Bath Prefix - 1183.04

| | STANDARD | PREMIER | SIGNATURE |
|---------------------------------------|--|--|--|
| | <ul style="list-style-type: none"> • 120V • Touch Control • 20-minute timer | <ul style="list-style-type: none"> • 120V • Digital Control • 20-minute timer • Ozone • LED Light | <ul style="list-style-type: none"> • 120V • Digital Control • 20-minute timer • Ozone • LED Light • Bluetooth • Sound Immersion • Water Level Sensor |
| (m) MICROSILK [®] | \$9,690 (1183.04.61.CC) | \$10,430 (1183.04.65.CC) | \$11,960 (1183.04.63.CC) |
| (a) AIRMASSEUR [®] | \$8,400 (1183.04.21.CC) | \$9,485 (1183.04.25.CC) | \$10,830 (1183.04.23.CC) |
| (S) SOAKING | \$4,735 (1183.04.00.CC) | | |



forma[®] Collection

Please specify when ordering

• **Standard Color:** CC= White-WT (01), Bisquite-BQ (40).
CUSTOM COLOR for color chart & codes, see pg. 133

Bath Options

For handle information, see page 127.
 For additional options and details, see page 128-130.

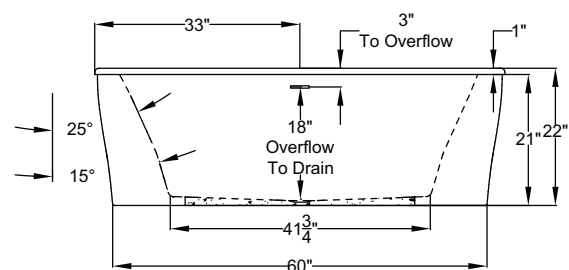
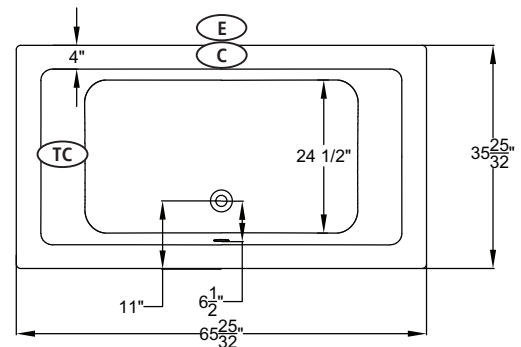
| | | | | |
|---|-------------------|-------------|-----------|---------|
| GH400 HANDLE - Factory installed. Accepts 1 handle across from overflow. | | | | \$315 |
| ACRYLIC EQUIPMENT CABINET - Page 129 (a) | | | | \$1,225 |
| BLUETOOTH SOUND IMMERSION SYSTEM - Page 128 | | | | \$835 |
| THERMO COMFORT - Page 129 | | | | \$840 |
| MICROSILK SHOWER WAND - Page 129 (m) | Polished Chrome | 8705-51-091 | | \$505 |
| LINEAR OVERFLOW DRAIN KITS For finish options, see page 129. | Polished Chrome | LDK-PC | Included | |
| | Optional Finishes | LDK-XX | ADD \$120 | |
| TILE FLANGE KIT - Page 129 | | | | N/A |

Feature Information

- (m)** Includes 1 MicroSilk delivery port, MicroSilk unit.
- (a)** Includes 44 strategically located air jets, 1hp blower w/ heater. Blower must be remote mounted if Acrylic Equipment Cabinet not selected.

Consult Spec Sheet on website for Boxed Weight & Cube. Operating Cap: 45 U.S. Gal. 120V, 20A (US)

- (C)** Control Location
- (E)** Equipment Cabinet
- (TC)** Thermo Comfort Heating Pad Location



Acrylic Equipment Cabinet is required on MicroSilk[®] baths and is available as an option on Airmasser[®] baths.

